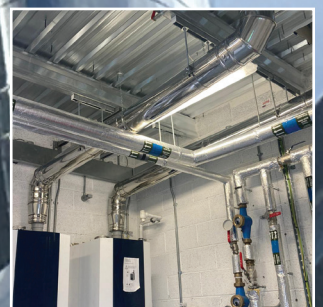


# Twin Wall Insulated Flue Systems

Fire Resistance Rating EI 120 & EI 240  
Chimney solutions designed for standby and  
prime-powered Data Centre diesel and gas generators

---



 Insulated  
Chimneys

---



# Insulated Chimneys is the market leader in designing, manufacturing and installing commercial and industrial exhaust flues in new and refurbished buildings in Ireland and internationally.

Our twin wall products are constructed with stainless steel and insulated with 30 / 50 / 100mm insulation, using rockwool or ceramic blanket ranging from 96kg/m<sup>3</sup> - 130kg/m<sup>3</sup>. All lengths, hoods, cowls, tees and elbow joints are manufactured, insulated and assembled at our premises.

Our fully seam-welded flues cater for all necessary heat expansion and are designed with all the appropriate load-bearing and wind-resistant supports.

Our team work closely with certified structural engineering companies and can deliver bespoke self-supporting towers containing a specified number of flues.

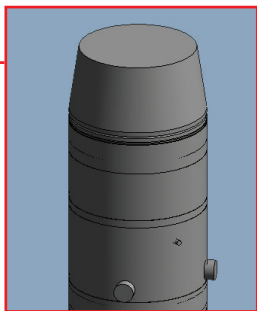


**Chimney solutions designed for standby and prime-powered Data Centre diesel and gas generators**



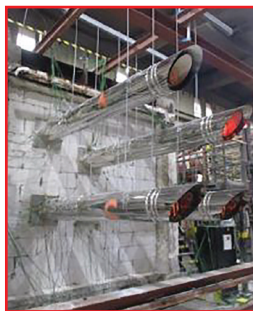
## SAMPLE PORTS

Ranging from 25mm - 125mm, sample ports can be fitted to all installations and retrofitted to existing flues.



## FIRE RATING

Using thermal breaks or firestop penetrations, our flue achieves ratings of EI 120 / EI 240 tested to EN1366-13.



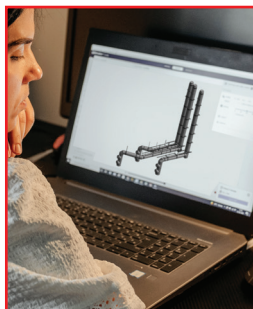
## RAIN COWLS

Bespoke rain cowls can be installed to ensure minimal rainwater ingress.



## DESIGN

We utilise the latest 3D software to provide a comprehensive design of our flues for incorporation into site models when required.



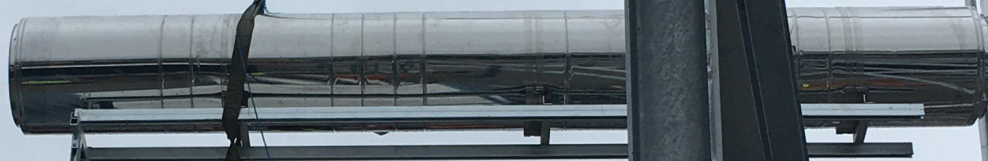
For more information visit us at  
[www.insulatedchimneys.com](http://www.insulatedchimneys.com)

 **Insulated  
Chimneys**





The system can be delivered to site pre-built on steel frames to make the site installation more efficient or supplied as individual sections and built on-site.



The flues carry a fire rating ranging from 120 minutes – 240 minutes. This rating was achieved following rigorous international testing and international analysis under European Regulations EN 1366-13.

## FIRE CERTIFICATE

Test Standard: EN 1366-13  
 Test Lab: Applus Laboratories  
 Reference Reports: Horizontal – 22/32301647  
 Vertical – 22/32302487

Product	Description	Penetration Seal	Integrity	Insulation
T50-HT	Twin wall insulated with 50mm rockwool 130kg/m <sup>3</sup> & 50mm superwool 96kg/m <sup>3</sup>	Thermal Break	240 minutes	240 minutes
T50-RF	Twin wall insulated with 50mm rockwool 130kg/m <sup>3</sup>	Firestop Plate	240 minutes	120 minutes



Insulated Chimneys (Ashbourne) Limited.  
 Unit 5B Summerhill Enterprise Centre,  
 Summerhill, Co. Meath. A83 T322, Ireland

Horizontal test: 18/03/22  
 Vertical test: 8/07/22

Insulated Chimneys Ltd are part of the Crofton Group



Insulated Chimneys (Ashbourne) Limited.  
 Unit 5B Summerhill Enterprise Centre,  
 Summerhill, Co. Meath. A83 T322, Ireland.

T: 046-9558123/114/112  
 E: [info@insulatedchimneys.com](mailto:info@insulatedchimneys.com)  
 W: [www.insulatedchimneys.com](http://www.insulatedchimneys.com)

Insulated Chimneys (Ashbourne) Limited are part of the Crofton Group